

Door Schedule					
Note: Under cut all bathroom and laundry doors 10 mm					
No.	Width	Height	Thick.	Qty.	Notes
D1	920	2340	40	134	solid core, self closing door (Rw 30 sound insulation rating) FRL -/60/30
D2	820	2340	40	156	solid core, self closing door (Rw 30 sound insulation rating) FRL -/60/30
D3	920	2340	35	35	
D4	820	2340	35	337	
D5	720	2340	35	339	
D6	620	2340	35	63	
D7	570	2340	40	54	solid core
D8	820	2340	40	4	solid core, self closing door FRL -/120/0
D9	720	2340	35	25	cavity sliding door
D10	820	2340	40	27	solid core w/ ventilation grilles
D11	720	2340	40	6	solid core
D12	920	2040	40	2	solid core
D13	820	2340	40	n/a	FRL -/120/30 smoke sealed fire door
D14	820	2040	40	10	solid core, self closing door (Rw 30 sound insulation rating) FRL -/60/30
D15	820	2340	40	2	solid core
D16	720	2040	35	21	

\* Refer to Window + Door Details for applicable AS Standards and BCA Notes.

### Basements Stair Legend

Note: All Rein. Concrete Stairs to Structural Engineer's Details

STAIR BL01	REIN. CONC. STAIR 16 STEPS 250mm GOINGS 187.5mm RISERS 25mm SPLAY
STAIR BL02	REIN. CONC. STAIR 22 STEPS 250mm GOINGS 168.2mm RISERS 25mm SPLAY

Part D2 - Construction of Exits  
All stair construction shall be in accordance with the  
with the BCA D2.9, D2.13, D2.14, D2.15,  
D2.16, D2.17, D2.20, D2.21, and D2.23.

C1.10 - Fire hazard properties  
Fire hazard properties of materials and assemblies are to comply  
with the BCA C1.10 & specification C1.10 or C1.10(s)

C2.12 - Separation of equipment  
Lift motors must be fire separated from the remainder of the building.  
The building will not contain emergency generators, central smoke  
control plant, boilers or batteries

C3.12 - Openings in floors and ceilings  
Service openings through fire rated floors must be fire stopped with  
an approved method in accordance with C3.12 of the BCA

D2.7 - Installations in exits & paths of travel  
(c) Gas or other fuel services must not be installed in a required exit.  
Electrical & telecommunications installations must be enclosed in  
non-combustible cabinets with smoke seals.

E3.7 - Fire services controls  
In passenger lifts designed in accordance with AS 1735 Parts 1 & 2,  
all lift cars serving any storey above an effective height of 12m must  
be provided with fire service controls.

Lift Construction  
The lift shall be constructed in accordance with the BCA part E3.  
Provision should be made for a stretcher facility as per BCA E3.2.  
Also see BCA E3.6 & AS 1735.12 for details of design for disabled.

F4.11 - Carparks  
Provide mechanical ventilation to carpark level in accordance  
with the BCA F4.11 & AS1668.2

D3.5 - Disabled carparking  
Disabled car space to be provided to comply with the BCA D3.5  
and in accordance with AS2890.6

Notes:  
- The internal driveway ramp widths, circulation aisles and  
vehicle turning areas shall be designed and constructed  
in accordance with AS2890.1 for two-way vehicle movements.  
- All security shutters to be controlled by residents with remote  
air key system access.  
- All ceilings to underground parking areas to be painted white.

Waste Management Plan:  
Refer to dwg no. 504

Fence + Mail + Driveway Details:  
Refer to dwg no. 500

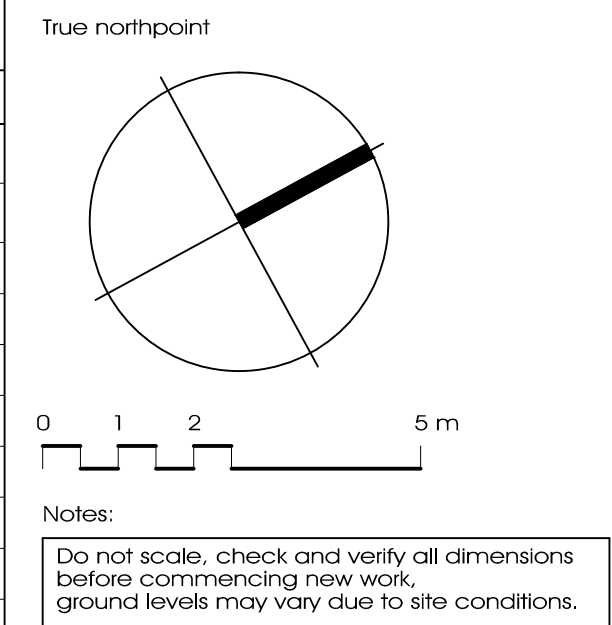
Window Schedule + Details:  
Refer to dwg no. 507+508

Footpath Design Surface Levels:  
Refer to Alignment Levels Plan

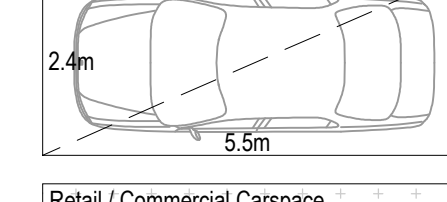
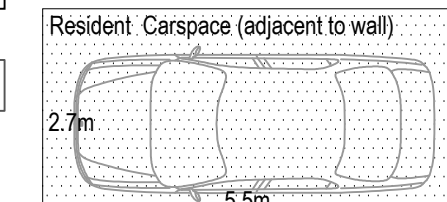
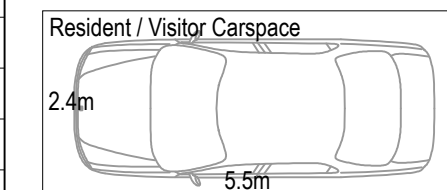
Landscape Details:  
Refer to Landscape Drawings

Stormwater Details + Site Levels:  
Refer to Hydraulic Eng. Drawings

Legend		
RLXXX	Structural Floor Level	
x RLXX.XX	Finished Reduced Level	
(1.8)	Ramp Up Gradient	



### Carparking Legend



Note:  
All disabled visitors carparking in accordance with  
AS2890.6 and adaptable residents parking in  
accordance with AS4299

Note:  
All parking spaces are a minimum of 2.4m in width  
by 5.5m in length. Spaces increase to 2.7m in width  
where adjacent to a wall or an obstruction. Spaces  
increase to 3.0m where adjacent to walls on both  
sides. (in accordance with AS2890.1)

Note:  
The internal driveway ramp widths, circulation aisles  
and vehicle turning areas shall be designed and  
constructed in accordance with AS2890.1 for two-  
way vehicle movements.

P1 Prelim. Issue to Consultants	12.02.14
Issue description	Date

Ryleton ply ltd t/as Architex  
abn 32 003 315 142

55 Cowper Street,  
Granville, 2142  
email@architex.com.au  
www.architex.com.au

Tel. 9682 5088  
Fax 9897 1606

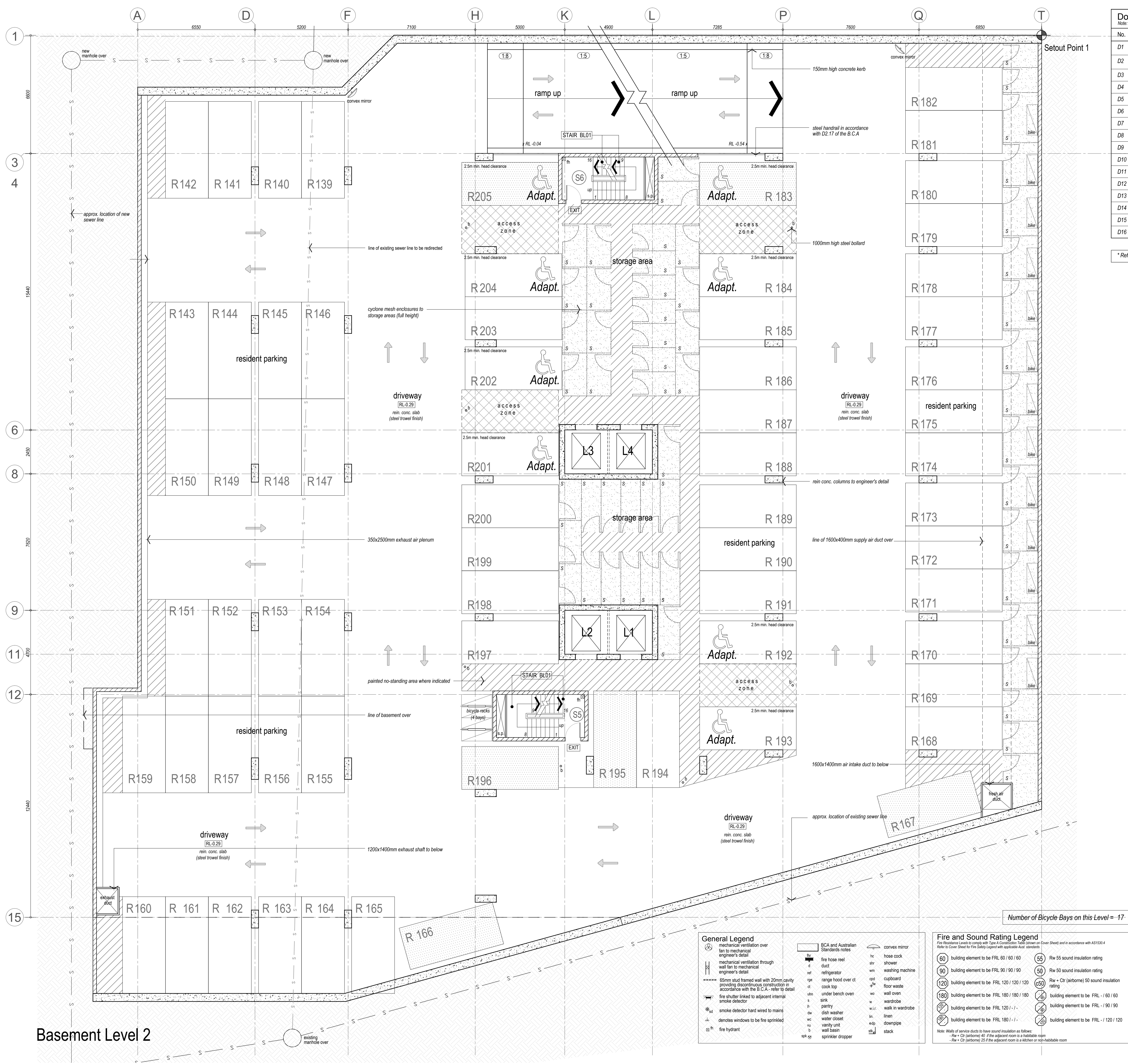
Project Construction Certificate Proposed Mixed Use Development		
Project address 2-8 East Street Granville		
Client Toplace Pty. Ltd.		
Title Basement Level 3		
Drawn pdp	Scale 1:100 @ A1	Checked
Job No. 2050	Drawing No. 201	Issue P1

CONSTRUCTION CERTIFICATE ONLY

General Legend	
	mechanical ventilation over fan to mechanical engineer's detail
	mechanical ventilation through wall fan to mechanical engineer's detail
	65mm stud framed wall with 20mm cavity providing discontinuous construction in accordance with the B.C.A. - refer to detail
	fire shutter linked to adjacent internal smoke detector
	smoke detector hard wired to mains
	denotes windows to be fire sprinkled
	fire hydrant
	BCA and Australian Standards notes
	fire hose reel
	duct
	refrigerator
	range hood over ct
	cook top
	under bench oven
	sink
	pantry
	dish washer
	water closet
	vanity unit
	wall basin
	sprinkler dropper
	hose cock
	shower
	washing machine
	cupboard
	floor waste
	wall oven
	wardrobe
	walk in wardrobe
	linen
	downpipe
	stack

Fire and Sound Rating Legend	
Fire Residential Levels to comply with Table 4.4.1 of the BCA (Refer to Cover Sheet) and in accordance with AS1530.4	
Refer to Cover Sheet for Fire Safety Legend with applicable AUL standards	
(60)	building element to be FRL 60 / 60 / 60
(90)	building element to be FRL 90 / 90 / 90
(120)	building element to be FRL 120 / 120 / 120
(180)	building element to be FRL 180 / 180 / 180
(60)	building element to be FRL - / 60 / 60
(90)	building element to be FRL - / 90 / 90
(120)	building element to be FRL - / 120 / 120
(180)	building element to be FRL - / 180 / 180
(60)	building element to be FRL 120 / - / -
(90)	building element to be FRL 180 / - / -
(120)	building element to be FRL - / 120 / 120
(180)	building element to be FRL - / 180 / 180
Note: Walls of service ducts to have sound insulation as follows: - Rw = Ctr (airborne) 40 if the adjacent room is a habitable room - Rw = Ctr (airborne) 25 if the adjacent room is a kitchen or non-habitable room	





Door Schedule					
Note: Under cut all bathroom and laundry doors 10 mm					
No.	Width	Height	Thick.	Qty.	Notes
D1	920	2340	40	134	solid core, self closing door (Rw 30 sound insulation rating) FRL -/60/30
D2	820	2340	40	156	solid core, self closing door (Rw 30 sound insulation rating) FRL -/60/30
D3	920	2340	35	35	
D4	820	2340	35	337	
D5	720	2340	35	339	
D6	620	2340	35	63	
D7	570	2340	40	54	solid core
D8	820	2340	40	4	solid core, self closing door FRL -/120/0
D9	720	2340	35	25	cavity sliding door
D10	820	2340	40	27	solid core w/ ventilation grilles
D11	720	2340	40	6	solid core
D12	920	2040	40	2	solid core
D13	820	2340	40	n/a	FRL -/120/30 smoke sealed fire door
D14	820	2040	40	10	solid core, self closing door (Rw 30 sound insulation rating) FRL -/60/30
D15	820	2340	40	2	solid core
D16	720	2040	35	21	

\* Refer to Window + Door Details for applicable AS Standards and BCA Notes.

### Basements Stair Legend

Note: All Rein. Concrete Stairs to Structural Engineer's Details

STAIR BL01

REIN. CONC. STAIR  
16 STEPS  
250mm GOINGS  
187.5mm RISERS  
25mm SPLAY

STAIR BL02

REIN. CONC. STAIR  
22 STEPS  
250mm GOINGS  
168.2mm RISERS  
25mm SPLAY

### Part D2 - Construction of Exits

All stair construction shall be in accordance with the with the BCA D2.9, D2.13, D2.14, D2.15, D2.16, D2.17, D2.20, D2.21, and D2.23.

### C1.10 - Fire hazard properties

Fire hazard properties of materials and assemblies are to comply with the BCA C1.10 & specification C1.10 or C1.10(s)

### C2.12 - Separation of equipment

Lift motors must be fire separated from the remainder of the building. The building will not contain emergency generators, central smoke control plant, boilers or batteries

### C3.12 - Openings in floors and ceilings

Service openings through fire rated floors must be fire stopped with an approved method in accordance with C3.12 of the BCA

### D2.7 - Installations in exits & paths of travel

(c) Gas or other fuel services must not be installed in a required exit. Electrical & telecommunications installations must be enclosed in non-combustible cabinets with smoke seals.

### E3.7 - Fire services controls

In passenger lifts designed in accordance with AS 1735 Parts 1 & 2, all lift cars serving any storey above an effective height of 12m must be provided with fire service controls.

### Lift Construction

The lift shall be constructed in accordance with the BCA part E3. Provision should be made for a stretcher facility as per BCA E3.2. Also see BCA E3.6 & AS 1735.12 for details of design for disabled.

### F4.11 - Carparks

Provide mechanical ventilation to carpark level in accordance with the BCA F4.11 & AS1668.2

### D3.5 - Disabled carparking

Disabled car space to be provided to comply with the BCA D3.5 and in accordance with AS2890.6

### Notes:

- The internal driveway ramp widths, circulation aisles and vehicle turning areas shall be designed and constructed in accordance with AS2890.1 for two-way vehicle movements.
- All security shutters to be controlled by residents with remote air key system access.
- All ceilings to underground parking areas to be painted white.

Waste Management Plan:  
Refer to dwg no. 504

Fence + Mail + Driveway Details:  
Refer to dwg no. 500

Window Schedule + Details:  
Refer to dwg no. 507+508

Footpath Design Surface Levels:  
Refer to Alignment Levels Plan

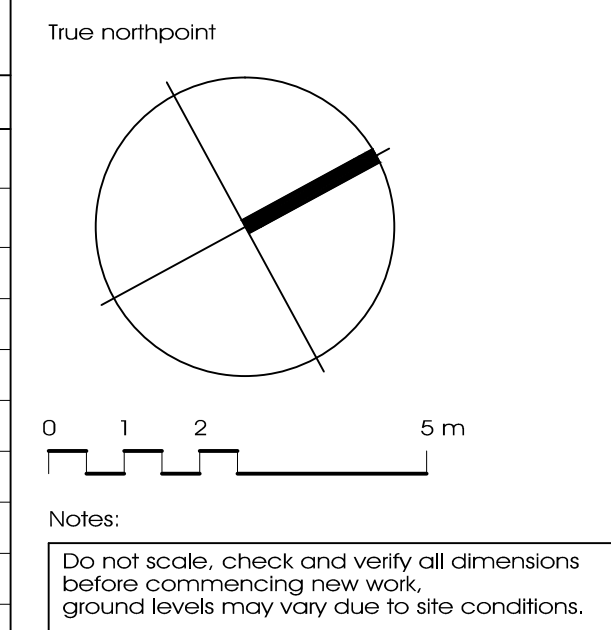
Landscape Details:  
Refer to Landscape Drawings

Stormwater Details + Site Levels:  
Refer to Hydraulic Eng. Drawings

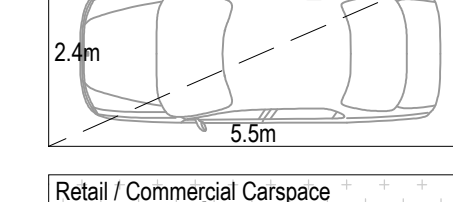
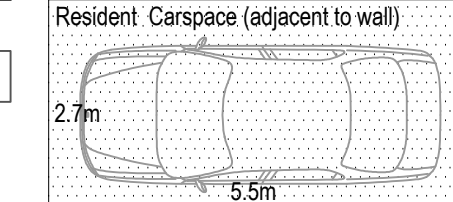
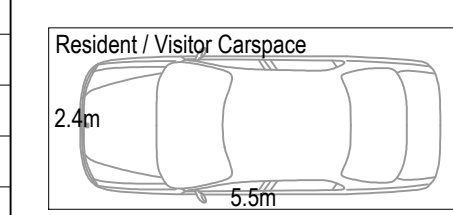
### Legend

RLXXX  
x RLXX.XX  
(1:8)

Structural Floor Level  
Finished Reduced Level  
Ramp Up Gradient



### Carparking Legend



Note:  
All disabled visitors carparking in accordance with AS2890.6 and adaptable residents parking in accordance with AS4299

Note:  
All parking spaces are a minimum of 2.4m in width by 5.5m in length. Spaces increase to 2.7m in width where adjacent to a wall or an obstruction. Spaces increase to 3.0m where adjacent to walls on both sides. (in accordance with AS2890.1)

Note:  
The internal driveway ramp widths, circulation aisles and vehicle turning areas shall be designed and constructed in accordance with AS2890.1 for two-way vehicle movements.

P1 Prelim. Issue to Consultants	12.02.14
Issue description	Date

Ryleton ply ltd t/as Architex  
abn 32 003 315 142

55 Cowper Street,  
Granville, 2142  
email@architex.com.au  
www.architex.com.au

Tel. 9682 5088  
Fax 9897 1606

Project Construction Certificate Proposed Mixed Use Development		
Project address 2-8 East Street Granville		
Client Toplace Pty. Ltd.		
Title Basement Level 2		
Drawn pdp	Scale 1:100 @ A1	Checked
Job No. 2050	Drawing No. 202	Issue P1

CONSTRUCTION CERTIFICATE ONLY

### General Legend

mechanical ventilation over fan to mechanical engineer's detail  
mechanical ventilation through wall fan to mechanical engineer's detail  
65mm stud framed wall with 20mm cavity providing discontinuous construction in accordance with the B.C.A. - refer to detail  
fire shutter linked to adjacent internal smoke detector  
smoke detector hard wired to mains  
denotes windows to be fire sprinkled  
fire hydrant

BCA and Australian Standards notes  
fire hose reel  
duct  
refrigerator  
range hood over ct  
cook top  
under bench oven  
sink  
pantry  
dish washer  
water closet  
vanity unit  
wall basin  
sprinkler dropper

convex mirror  
hose cock  
shower  
washing machine  
cupboard  
floor waste  
wall oven  
wardrobe  
walk in wardrobe  
linen  
downpipe  
stack

### Fire and Sound Rating Legend

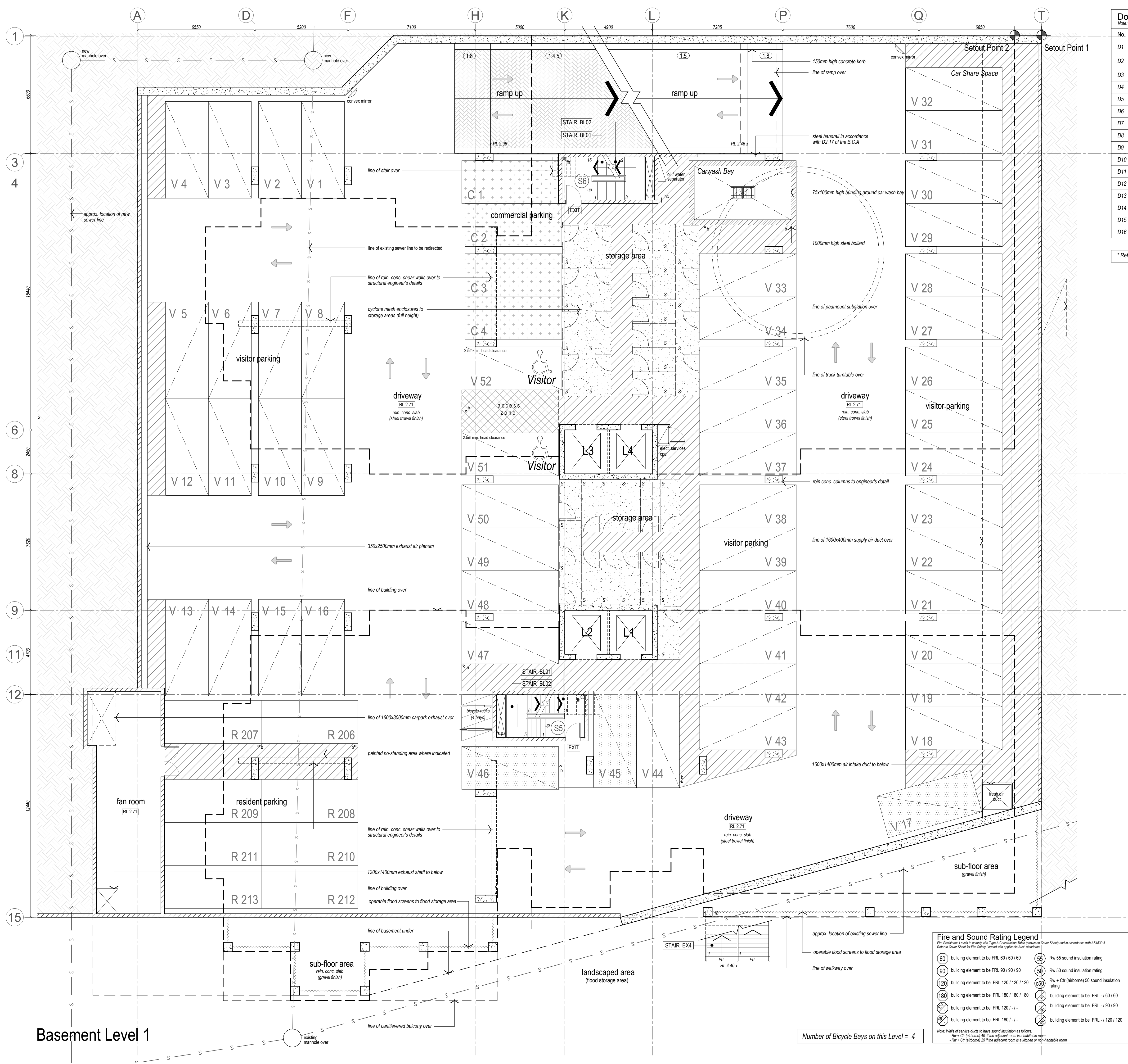
Fire Residential Levels to comply with AS 1530.4  
Refer to Cover Sheet for Fire Safety Legend with applicable Aus. standards

60 building element to be FRL 60 / 60 / 60  
90 building element to be FRL 90 / 90 / 90  
120 building element to be FRL 120 / 120 / 120  
180 building element to be FRL 180 / 180 / 180  
building element to be FRL 120 / - / -  
building element to be FRL 180 / - / -

Note: Walls of service ducts to have sound insulation as follows:  
- Rw + Ctr (airborne) 40 if the adjacent room is a habitable room  
- Rw + Ctr (airborne) 25 if the adjacent room is a kitchen or non-habitable room

55 Rw 55 sound insulation rating  
50 Rw 50 sound insulation rating  
Rw + Ctr (airborne) 50 sound insulation rating  
building element to be FRL - / 60 / 60  
building element to be FRL - / 90 / 90  
building element to be FRL - / 120 / 120





Door Schedule					
Note: Under cut all bathroom and laundry doors 10 mm					
No.	Width	Height	Thick.	Qty.	Notes
D1	920	2340	40	134	solid core, self closing door (Rw 30 sound insulation rating) FRL -/60/30
D2	820	2340	40	156	solid core, self closing door (Rw 30 sound insulation rating) FRL -/60/30
D3	920	2340	35	35	
D4	820	2340	35	337	
D5	720	2340	35	339	
D6	620	2340	35	63	
D7	570	2340	40	54	solid core
D8	820	2340	40	4	solid core, self closing door FRL -/120/30
D9	720	2340	35	25	cavity sliding door
D10	820	2340	40	27	solid core w/ ventilation grilles
D11	720	2340	40	6	solid core
D12	920	2040	40	2	solid core
D13	820	2340	40	n/a	FRL -/120/30 smoke sealed fire door
D14	820	2040	40	10	solid core, self closing door (Rw 30 sound insulation rating) FRL -/60/30
D15	820	2340	40	2	solid core
D16	720	2040	35	21	

\* Refer to Window + Door Details for applicable AS Standards and BCA Notes.

### Basements Stair Legend

Note: All Rein. Concrete Stairs to Structural Engineer's Details

STAIR BL01

REIN. CONC. STAIR  
16 STEPS  
250mm GOINGS  
187.5mm RISERS  
25mm SPLAY

STAIR BL02

REIN. CONC. STAIR  
22 STEPS  
250mm GOINGS  
168.2mm RISERS  
25mm SPLAY

#### Part D2 - Construction of Exits

All stair construction shall be in accordance with the with the BCA D2.9, D2.13, D2.14, D2.15, D2.16, D2.17, D2.20, D2.21, and D2.23.

#### C1.10 - Fire hazard properties

Fire hazard properties of materials and assemblies are to comply with the BCA C1.10 & specification C1.10 or C1.10(s).

#### C2.12 - Separation of equipment

Lift motors must be fire separated from the remainder of the building. The building will not contain emergency generators, central smoke control plant, boilers or batteries.

#### C3.12 - Openings in floors and ceilings

Service openings through fire rated floors must be fire stopped with an approved method in accordance with C3.12 of the BCA.

#### D2.7 - Installations in exits & paths of travel

(c) Gas or other fuel services must not be installed in a required exit. Electrical & telecommunications installations must be enclosed in non-combustible cupboards with smoke seals.

#### E3.7 - Fire services controls

In passenger lifts designed in accordance with AS 1735 Parts 1 or 2, all lift cars serving any storey above an effective height of 12m must be provided with fire service controls.

#### Lift Construction

The lift shall be constructed in accordance with the BCA part E3. Provision should be made for a stretcher facility as per BCA E3.2. Also see BCA E3.6 & AS 1735.12 for details of design for disabled.

#### F4.11 - Carparks

Provide mechanical ventilation to carpark level in accordance with the BCA F4.11 & AS1668.2

#### D3.5 - Disabled carparking

Disabled car space to be provided to comply with the BCA D3.5 and in accordance with AS2890.6

### Notes:

- The internal driveway ramp widths, circulation aisles and vehicle turning areas shall be designed and constructed in accordance with AS2890.1 for two-way vehicle movements.
- All security shutters to be controlled by residents with remote air key system access.
- All ceilings to underground parking areas to be painted white.

Waste Management Plan:  
Refer to dwg no. 504

Fence + Mail + Driveway Details:  
Refer to dwg no. 500

Window Schedule + Details:  
Refer to dwg no. 507+508

Footpath Design Surface Levels:  
Refer to Alignment Levels Plan

Landscape Details:  
Refer to Landscape Drawings

Stormwater Details + Site Levels:  
Refer to Hydraulic Eng. Drawings

### Legend

Structural Floor Level

Finished Reduced Level

Ramp Up Gradient

### Fire and Sound Rating Legend

Fire: Residential Levels to comply with Table 4.1 of the Code of Practice for Fire Safety (Refer to Cover Sheet) and in accordance with AS1530.4

Refer to Cover Sheet for Fire Safety Legend with applicable Aust. standards

60 building element to be FRL 60 / 60 / 60

90 building element to be FRL 90 / 90 / 90

120 building element to be FRL 120 / 120 / 120

180 building element to be FRL 180 / 180 / 180

building element to be FRL 120 / - / -

building element to be FRL 180 / - / -

building element to be FRL - / 120 / 120

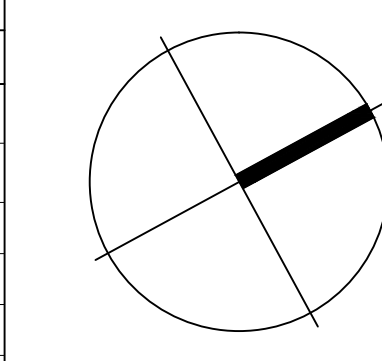
building element to be FRL - / 60 / 60

building element to be FRL - / 90 / 90

building element to be FRL - / 120 / 120

Note: Walls of service ducts to have sound insulation as follows:  
- Rw + Ctr (airborne) 40 if the adjacent room is a habitable room  
- Rw + Ctr (airborne) 25 if the adjacent room is a kitchen or non-habitable room

True northpoint

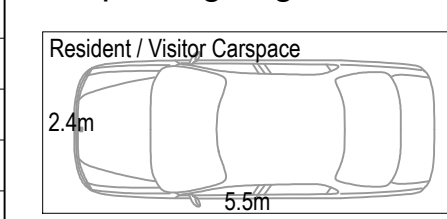


0 1 2 5 m

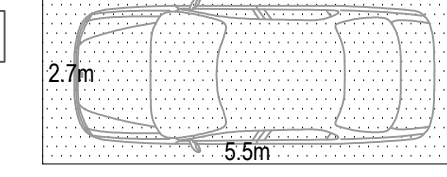
Notes:

Do not scale, check and verify all dimensions before commencing new work, ground levels may vary due to site conditions.

### Carparking Legend



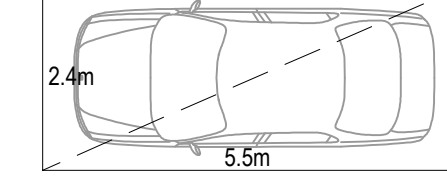
Resident / Visitor Car space



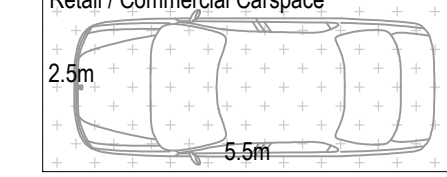
Resident Car space (adjacent to wall)



Adaptable / Disabled Visitor Car space



Retail / Commercial Car space



Note:

All disabled visitors carparking in accordance with AS2890.6 and adaptable residents parking in accordance with AS4299

Note:

All parking spaces are a minimum of 2.4m in width by 5.5m in length. Spaces increase to 2.7m in width where adjacent to a wall or an obstruction. Spaces increase to 3.0m where adjacent to walls on both sides. (in accordance with AS2890.1)

Note:

The internal driveway ramp widths, circulation aisles and vehicle turning areas shall be designed and constructed in accordance with AS2890.1 for two-way vehicle movements.

P1 Prelim. Issue to Consultants

12.02.14

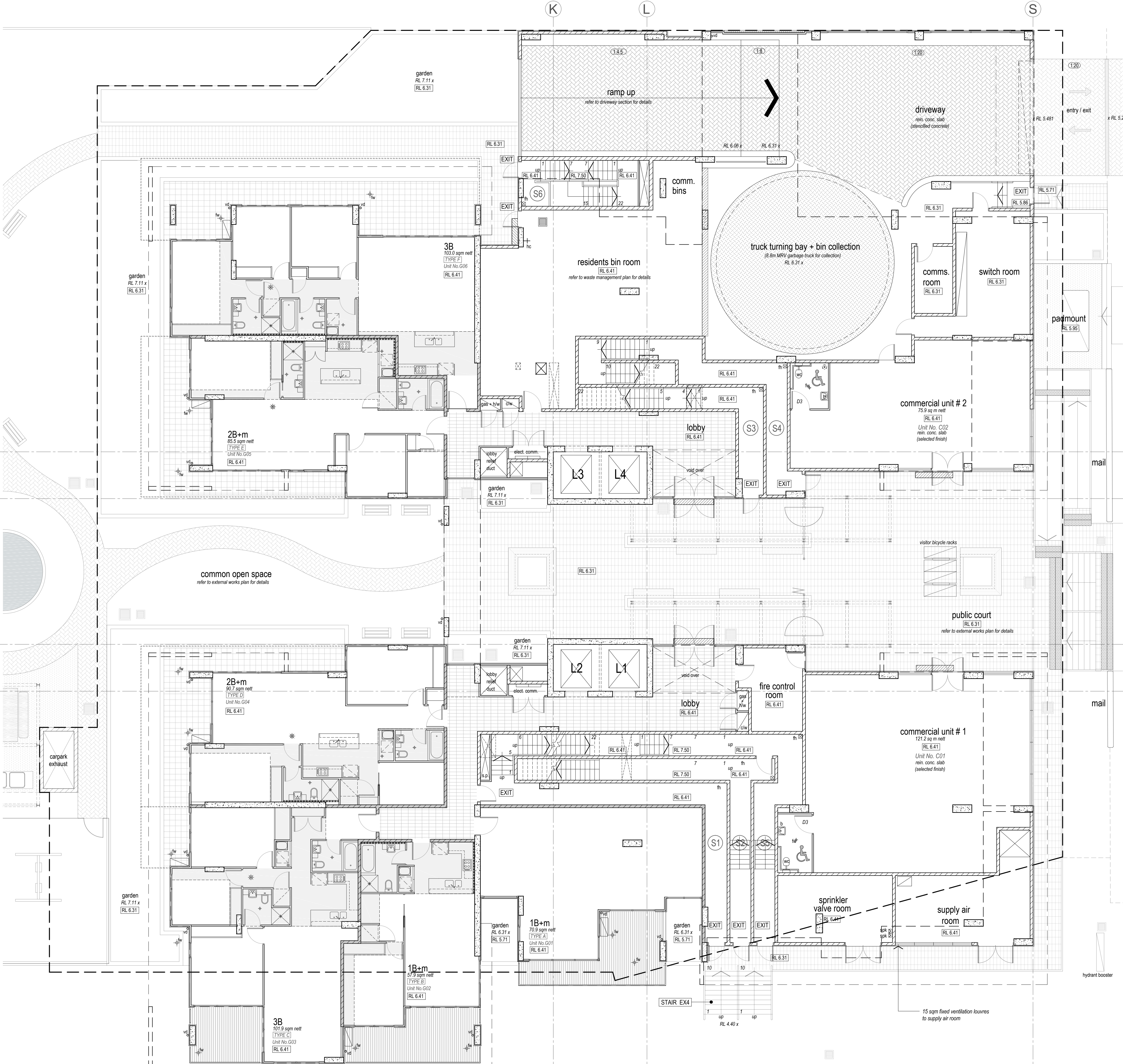
Issue description

Date

**architex**  
Ryleton ply ltd t/as Architex  
abn 32 003 315 142  
55 Cowper Street,  
Graville, 2142  
email@architex.com.au  
www.architex.com.au  
Tel. 9682 5088  
Fax 9897 1606

Project Construction Certificate Proposed Mixed Use Development		
Project address 2-8 East Street Graville		
Client Toplace Pty. Ltd.		
Title Basement Level 1		
Drawn pdp	Scale 1:100 @ A1	Checked
Job No. 2050	Drawing No. 203	Issue P1





Door Schedule					
Note: Under cut all bathroom and laundry doors 10 mm					
No.	Width	Height	Thick.	Qty.	Notes
D1	920	2340	40	134	solid core, self closing door (Rw 30 sound insulation rating) FRL ->60/30
D2	820	2340	40	156	solid core, self closing door (Rw 30 sound insulation rating) FRL ->60/30
D3	920	2340	35	35	
D4	820	2340	35	337	
D5	720	2340	35	339	
D6	620	2340	35	63	
D7	570	2340	40	54	solid core
D8	820	2340	40	4	solid core, self closing door FRL ->120/90
D9	720	2340	35	25	cavity sliding door
D10	820	2340	40	27	solid core w/ ventilation grilles
D11	720	2340	40	6	solid core
D12	920	2040	40	2	solid core
D13	820	2340	40	n/a	FRL ->120/30 smoke sealed fire door
D14	820	2040	40	10	solid core, self closing door (Rw 30 sound insulation rating) FRL ->60/30
D15	820	2340	40	2	solid core
D16	720	2040	35	21	

\* Refer to Window + Door Details for applicable AS Standards and BCA Notes.

Fire and Sound Rating Legend			
Fire Resistance Levels (a) are given with Type Construction (b) and in accordance with AS1530.4			
Refer to Cover Sheet for Fire Safety Legend with applicable Aust. standards			
(60)	building element to be FRL 60 / 60 / 60	(55)	Rw 55 sound insulation rating
(90)	building element to be FRL 90 / 90 / 90	(50)	Rw 50 sound insulation rating
(120)	building element to be FRL 120 / 120 / 120	(50)	Rw + Ctr (airborne) 50 sound insulation rating
(180)	building element to be FRL 180 / 180 / 180	(6)	building element to be FRL - / 60 / 60
(180)	building element to be FRL 120 / - / -	(6)	building element to be FRL - / 90 / 90
(180)	building element to be FRL 180 / - / -	(6)	building element to be FRL - / 120 / 120

Note: Walls of service ducts to have sound insulation as follows:  
- Rw + Ctr (airborne) 40 if the adjacent room is a habitable room  
- Rw + Ctr (airborne) 25 if the adjacent room is a kitchen or non-habitable room

### Stair Type Legend

Note: All Rein. Concrete Stairs to Structural Engineer's Details

STAIR 01	REIN. CONC. STAIR 3 STEPS 250mm GOINGS 150.0mm RISERS 25mm SPLAY
STAIR 02	REIN. CONC. STAIR 3 STEPS 250mm GOINGS 150.0mm RISERS 25mm SPLAY
STAIR 03	REIN. CONC. STAIR 3 STEPS 250mm GOINGS 150.0mm RISERS 25mm SPLAY
STAIR 04	REIN. CONC. STAIR 15 STEP 250mm GOINGS 180.0mm RISERS 25mm SPLAY
STAIR 05	REIN. CONC. STAIR 16 STEPS 250mm GOINGS 187.5mm RISERS 25mm SPLAY

### Basements Stair Legend

Note: All Rein. Concrete Stairs to Structural Engineer's Details

STAIR BL01	REIN. CONC. STAIR 16 STEPS 250mm GOINGS 187.5mm RISERS 25mm SPLAY
STAIR BL02	REIN. CONC. STAIR 22 STEPS 250mm GOINGS 168.2mm RISERS 25mm SPLAY

Part D2 - Construction of Exits  
All stair construction shall be in accordance with the  
with the BCA D2.9, D2.13, D2.14, D2.15,  
D2.16, D2.17, D2.20, D2.21, and D2.23.

### Notes:

- The internal driveway ramp widths, circulation aisles and vehicle turning areas shall be designed and constructed in accordance with AS2890.1 for two-way vehicle movements.
- All security shutters to be controlled by residents with remote air key system access.
- All ceilings to underground parking areas to be painted white.

Waste Management Plan: Refer to dwg no. 504
Fence + Mail + Driveway Details: Refer to dwg no. 500
Window Schedule + Details: Refer to dwg no. 507+508
Footpath Design Surface Levels: Refer to Alignment Levels Plan
Landscape Details: Refer to Landscape Drawings
Stormwater Details + Site Levels: Refer to Hydraulic Eng. Drawings

Legend		
RLXXX	Structural Floor Level	
x RLXX.XX	Finished Reduced Level	
(1.8)	Ramp Up Gradient	

D3.2 General Access Requirements An accessway must be provided to a building required to be accessible in accordance with BCA D3.2 and AS1428.1
D3.5 - Disabled parking Disabled car space to be provided to comply with the BCA D3.5 and in accordance with AS 2890.6
D3.6 - Signage Signage for accessible facilities such as braille and tactile signs must identify the sanitary facility in the retail / commercial tenancy in accordance with AS1428.1
D3.7 - Hearing Augmentation A hearing augmentation system required to comply with AS1428.1
D3.8 - Tactile indicators Tactile indicators are required at the top and bottom of stairs / ramp at the entry of the building in accordance with AS1428.1
F2.4 - Accessible sanitary facilities Construct sanitary facilities for people with disabilities in accordance with AS1428.1 (2009) + AS1428.4 and BCA Part D3 + F2.4
C1.10 - Fire hazard properties Fire hazard properties of materials/assemblies are to comply with the BCA C1.10 & specification C1.10 or C1.10(a)
C2.7 - Separation of fire walls Construct fire walls in accordance with BCA 2.7(a) and Separation of fire compartments in accordance with the BCA 2.7(c) and AS 3700.

C2.10 - Separation of lift shafts Lifts must be separated from the remainder of the building by enclosure in a shaft to comply with BCA C2.10.
---

C2.13 - Electricity supply system Separation of all electrical equipment to comply with BCA C2.13.
---

C3.2 - Protection of openings in external walls Openings in an external wall that is required to have an FRL must be protected in accordance with BCA C3.4
---

C3.3 - Separation of external walls and openings in fire compartments The distance between external walls and any openings within them in difference fire compartments separated by a fire wall must not be less than that set out in Table C3.3 unless each wall have an FRL not less than 60/60/60 and any openings protected in accordance with C3.4.
---

E3.7 - Fire services controls In passenger lifts designed in accordance with AS 1735 Parts 1 or 2, all lift cars serving any storey above an effective height of 12m must be provided with fire service controls.
--

C3.10 - Openings in fire-isolated lift shafts (a) An entrance door to that shaft must be protected by ->60/- fire doors to comply with AS 1735.11 and remain closed when not in use.
---

C3.11 - Bounding construction: Class 2, 3 & 4 buildings A doorway must be protected if it provides access from a sole-occupancy unit to a public corridor in accordance with BCA C3.11, and Specification C1.1 and C3.4.
---

C3.12 & C3.15 - Openings in floors and ceilings for services Service openings through fire rated floors must be fire stopped with an approved method in accordance with BCA C3.12 and C3.15
--

D2.7 - Installations in exits & paths of travel Gas or other fuel services must not be installed in a required exit. Services or equipment installations must be encased in non-combustible cupboards with smoke seals.
--

E3.0 Lift Construction The lift shaft shall be constructed in accordance with the BCA E3. Provisions should be made for a stretcher facility as per BCA E3.2. (also see BCA E3.6 + AS 1735.12 for details of design for disabled people)
---

E1.8 - Fire Control Centres Construction and content of the fire control room to comply with BCA Specification E1.8
--

P1 Prelim. Issue to Consultants	12.02.14
Issue description	Date

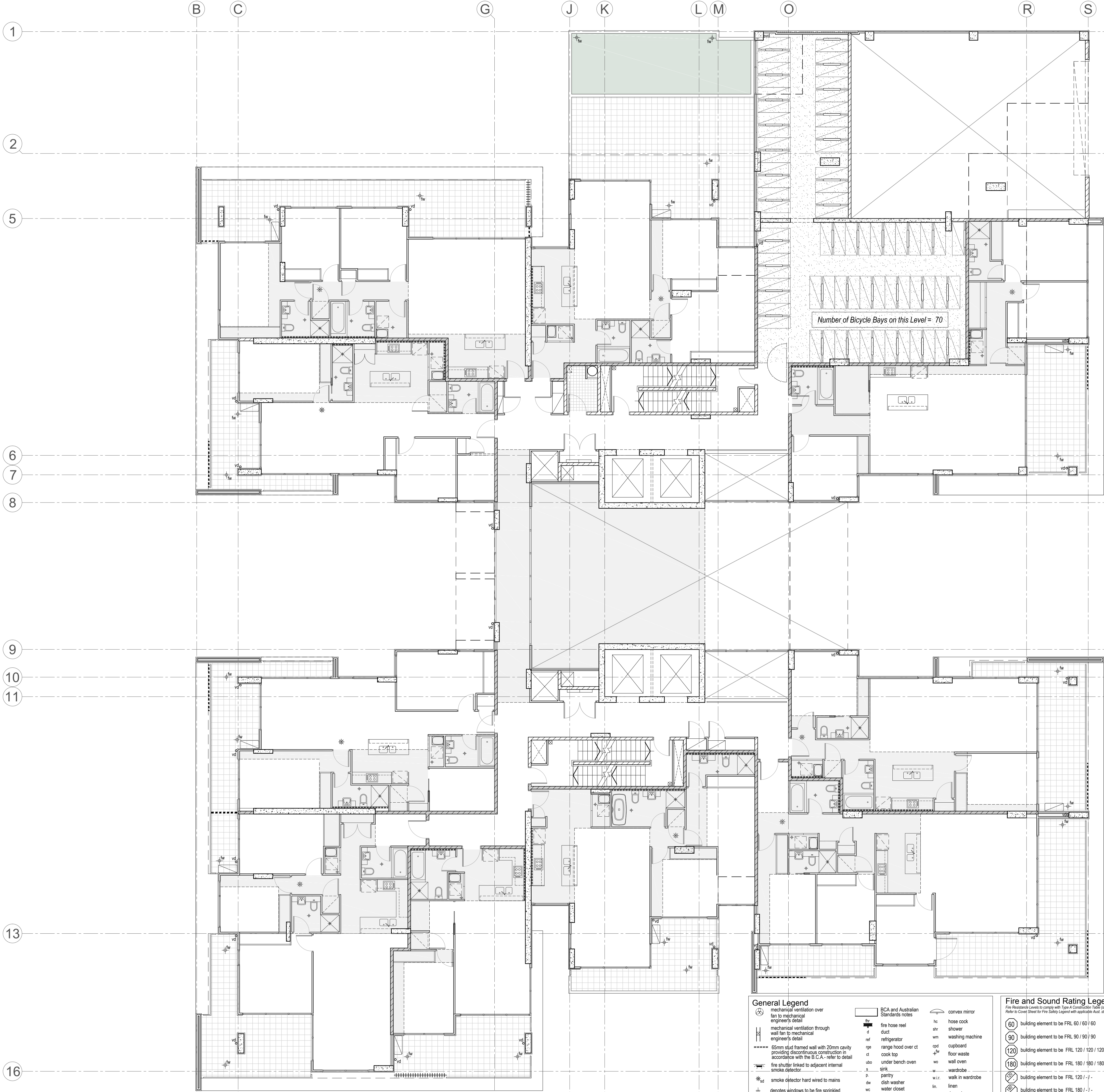
Ryleton ply ltd / as Architex  
abn 32 003 315 142

55 Cowper Street,  
Granville, 2142  
email@architex.com.au  
www.architex.com.au

Tel. 9682 5088  
Fax 9897 1606

Project Construction Certificate Proposed Mixed Use Development		
Project address 2-8 East Street Granville		
Client Toplace Pty. Ltd.		
Title  Ground Floor Level		
Drawn pdp	Scale 1:100 @ A1	Checked
Job No. 2050	Drawing No. 300	Issue P1





Door Schedule					
Note: Under cut all bathroom and laundry doors 10 mm					
No.	Width	Height	Thick.	Qty.	Notes
D1	920	2340	40	134	solid core, self closing door (Rw 30 sound insulation rating) FRL -/60/30
D2	820	2340	40	156	solid core, self closing door (Rw 30 sound insulation rating) FRL -/60/30
D3	920	2340	35	35	
D4	820	2340	35	337	
D5	720	2340	35	339	
D6	620	2340	35	63	
D7	570	2340	40	54	solid core
D8	820	2340	40	4	solid core, self closing door FRL -/120/0
D9	720	2340	35	25	cavity sliding door
D10	820	2340	40	27	solid core w/ ventilation grilles
D11	720	2340	40	6	solid core
D12	920	2040	40	2	solid core
D13	820	2340	40	n/a	FRL -/120/30 smoke sealed fire door
D14	820	2040	40	10	solid core, self closing door (Rw 30 sound insulation rating) FRL -/60/30
D15	820	2340	40	2	solid core
D16	720	2040	35	21	

NOTE: OPERATION OF DOOR LATCHES TO ALL REQUIRED EXIT DOORS SHALL BE IN ACCORDANCE WITH BCA D2.2.3

NOTE: PROVIDE REMOVABLE HINGES TO ALL BATHROOMWC DOORS THAT ARE WITHIN 1.2M OF A CLOSET PAN AS PER B.C.A (F2.5)

D2.21 - Operation of latch

A door in a required exit forming part of a required exit or in the path o travel to a required exit must be readily operable without a key from the side that faces a person seeking egress, by a single hand downward action or putting action on a single device which is located between 900mm and 1.2m from the floor, except if it -

(a) serves a vault, strong-room, sanitary compartment, or the like; or

(b) serves only, or is within -

(i) a sole-occupancy unit in a class 2 or 3 building or a class 4 part;

(ii) a sole-occupancy unit with a floor area not more than 200m<sup>2</sup> in a class 5, 6, 7 or 8 building;

(iii) a space which is otherwise inaccessible to persons at all times when the door is locked.

D2.22 - Re-entry from fire isolated exits.

Doors in fire isolated stairs not to be lockable from the inside.

D2.8 - Enclosure of space under stairs and ramps.

The space below fire rated stairs and required non fire isolated stairs and ramps is not to be enclosed to form a cupboard or similar enclosed space.

### Stair Type Legend

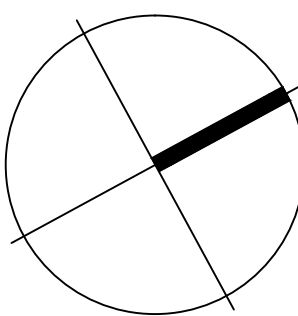
Note: All Rein. Concrete Stairs to Structural Engineer's Details

STAIR 01	REIN. CONC. STAIR 3 STEPS 250mm GOINGS 150.0mm RISERS 25mm SPLAY
STAIR 02	REIN. CONC. STAIR 3 STEPS 250mm GOINGS 150.0mm RISERS 25mm SPLAY
STAIR 03	REIN. CONC. STAIR 3 STEPS 250mm GOINGS 150.0mm RISERS 25mm SPLAY
STAIR 04	REIN. CONC. STAIR 15 STEPS 250mm GOINGS 150.0mm RISERS 25mm SPLAY
STAIR 05	REIN. CONC. STAIR 16 STEPS 250mm GOINGS 187.5mm RISERS 25mm SPLAY

Part D2 - Construction of Exits

All stair construction shall be in accordance with the BCA, D2.9, D2.13, D2.14, D2.15, D2.16, D2.17, D2.20, D2.21, and D2.23

True northpoint



0 1 2 5 m

Notes:

Do not scale, check and verify all dimensions before commencing new work, ground levels may vary due to site conditions.

C1.10 - Fire hazard properties

Fire hazard properties of materials and assemblies are to comply with the BCA C1.10 & specification C1.10 or C1.10(a)

C2.7 - Separation of fire walls

Construct fire walls in accordance with BCA 2.7(a) and Separation of fire compartments in accordance with the BCA 2.7(c) and AS 3700.

C2.10 - Separation of lift shafts

Lifts must be separated from the remainder of the building by enclosure in a shaft to comply with BCA C2.10.

C2.13 - Electricity supply system

Separation of all electrical equipment to comply with BCA C2.13.

C3.2 - Protection of openings in external walls

Openings in an external wall that is required to have an FRL must be protected in accordance with BCA C3.4

C3.3 - Separation of external walls and openings in fire compartments

The distance between external walls and any openings within them in difference fire compartments separated by a fire wall must not be less than that set out in Table C3.3 unless each wall have an FRL not less than 60/60/60 and any openings protected in accordance with C3.4.

E3.7 - Fire services controls

In passenger lifts designed in accordance with AS 1735 Parts 1 or 2, all lift cars serving any storey above an effective height of 12m must be provided with fire service controls.

C3.10 - Openings in fire-isolated lift shafts

(a) An entrance door to that shaft must be protected by -/60/- fire doors to comply with AS 1735.11 and remain closed when not in use.

C3.11 - Bounding construction: Class 2, 3 & 4 buildings

A doorway must be protected if it provides access from a sole-occupancy unit to a public corridor in accordance with BCA C3.11, and Specification C1.1 and C3.4.

C3.12 & C3.15 - Openings in floors and ceilings for services

Service openings through fire rated floors must be fire stopped with an approved method in accordance with BCA C3.12 and C3.15

D2.7 - Installations in exits & paths of travel

Gas or other fuel services must not be installed in a required exit. Services or equipment installations must be enclosed in non-combustible cupboards with smoke seals.

E3.0 Lift Construction

The lift shall be constructed in accordance with the BCA E3. Provisions should be made for a stretcher facility as per BCA E3.2, (also see BCA E3.6 + AS 1735.12 for details of design for disabled people)

P1 Prelim. Issue to Consultants

12.02.14

Issue description

Date

**architex**

Ryleton ply Ltd t/as Architex  
abn 32 003 315 142

55 Cowper Street,  
Granville, 2142  
email@architex.com.au  
www.architex.com.au

Tel. 9682 5088  
Fax 9897 1606

Project

Construction Certificate  
Proposed Mixed Use Development

Project address

2-8 East Street  
Granville

Client

Toplace Pty. Ltd.

Title

Level 1

Drawn

pdp

Scale

1:100 @ A1

Checked

Job No.

2050

Drawing No.

301

Issue

P1

Ceiling levels of Units to be a minimum of 2.7m height except where bulkheads are shown.

hatch indicates bulkhead over with 2.4m ceiling height  
(Height of all rooms and spaces in accordance with BCA Part F3.1)

Post-Adaptable Layouts:  
Refer to dwg no. 503

Window Schedule + Details:  
Refer to dwg no. 507 + 508

### Notes:

- Party walls are not to be compromised by the incorporation of a plumbing pipe or any other service element.
- Internal Wet Areas: selected ceramic floor tiles on screed laid to fall to floorwaste. Provisions for waterproofing, damp proofing and floorwastes in accordance with AS 2870 + AS3740 + BCA Part F1.10 & F1.10
- All mechanical ventilation to mechanical engineer's details and specifications
- All units to have wall mounted drying cabinets in laundries.
- Balconies: 1000mm high pre-painted steel framed balustrade with glass infill panels to comply with the BCA
- All rain water drainage pipes on balconies are to run inside the slab connected to downpipes which are inside the balconies. See hydraulic engineers' drawings for details.

### Legend

RLXXXX	Structural Floor Level
RLXXXX	Finished Reduced Level

### General Legend

mechanical ventilation over fan to mechanical engineer's detail	BCA and Australian Standards notes	convex mirror
mechanical ventilation through wall fan to mechanical engineer's detail	fire hose reel	hose cock
65mm stud framed wall with 20mm cavity providing discontinuous construction in accordance with the B.C.A., refer to detail	duct	shower
fire shutter linked to adjacent internal smoke detector	refrigerator	washing machine
smoke detector hard wired to mains	range hood over ct	cupboard
denotes windows to be fire sprinkled	cook top	floor waste
fire hydrant	under bench oven	wall oven
	sink	wardrobe
	pantry	walk in wardrobe
	dish washer	linen
	water closet	downpipe
	vanity unit	stack
	wall basin	
	sprinkler dropper	

### Fire and Sound Rating Legend

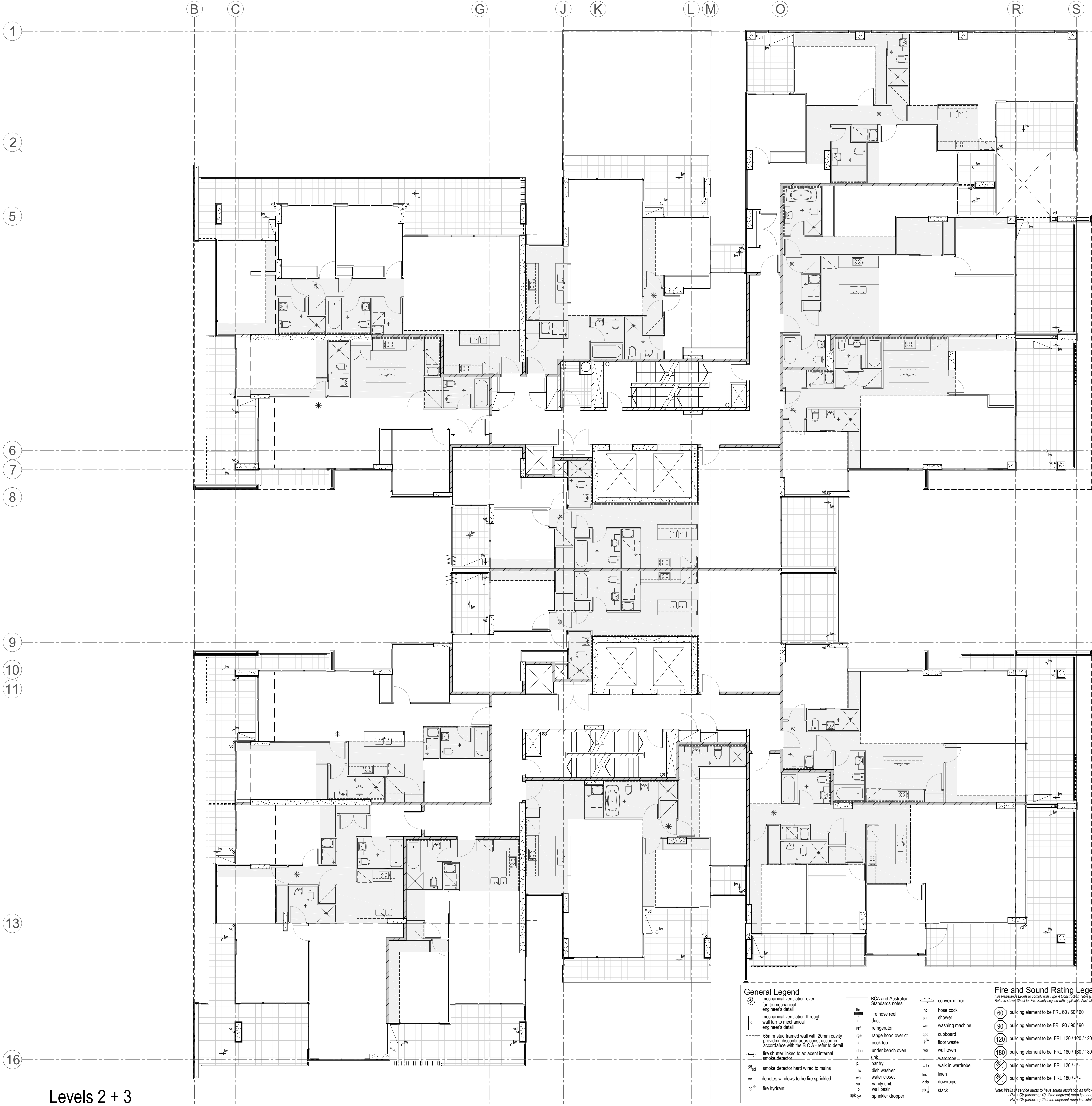
60	building element to be FRL 60 / 60 / 60	55	Rw 55 sound insulation rating
90	building element to be FRL 90 / 90 / 90	50	Rw 50 sound insulation rating
120	building element to be FRL 120 / 120 / 120	50	Rw + Ctr (airborne) 50 sound insulation rating
180	building element to be FRL 180 / 180 / 180	60	building element to be FRL - / 60 / 60
60	building element to be FRL 120 / - / -	60	building element to be FRL - / 90 / 90
60	building element to be FRL 180 / - / -	60	building element to be FRL - / 120 / 120

Note: Walls of service ducts to have sound insulation as follows:  
- Rw + Ctr (airborne) 40 if the adjacent room is a habitable room  
- Rw + Ctr (airborne) 25 if the adjacent room is a kitchen or non-habitable room

Level 1

CONSTRUCTION CERTIFICATE ONLY





Door Schedule					
Note: Under cut all bathroom and laundry doors 10 mm					
No.	Width	Height	Thick.	Qty.	Notes
D1	920	2340	40	134	solid core, self closing door (Rw 30 sound insulation rating) FRL -/60/30
D2	820	2340	40	156	solid core, self closing door (Rw 30 sound insulation rating) FRL -/60/30
D3	920	2340	35	35	
D4	820	2340	35	337	
D5	720	2340	35	339	
D6	620	2340	35	63	
D7	570	2340	40	54	solid core
D8	820	2340	40	4	solid core, self closing door FRL -/120/0
D9	720	2340	35	25	cavity sliding door
D10	820	2340	40	27	solid core w/ ventilation grilles
D11	720	2340	40	6	solid core
D12	920	2040	40	2	solid core
D13	820	2340	40	n/a	FRL -/120/30 smoke sealed fire door
D14	820	2040	40	10	solid core, self closing door (Rw 30 sound insulation rating) FRL -/60/30
D15	820	2340	40	2	solid core
D16	720	2040	35	21	

NOTE: OPERATION OF DOOR LATCHES TO ALL REQUIRED EXIT DOORS SHALL BE IN ACCORDANCE WITH BCA D2.2.

NOTE: PROVIDE REMOVABLE HINGES TO ALL BATHROOMWC DOORS THAT ARE WITHIN 1.2M OF A CLOSET PAN AS PER B.C.A (F2.5)

D2.21 - Operation of latch

A door in a required exit forming part of a required exit or in the path of travel to a required exit must be readily operable without a key from the side that faces a person seeking egress, by a single hand downward action or putting action on a single device which is located between 900mm and 1.2m from the floor, except if it:

(a) serves a vault, strong-room, sanitary compartment or the like; or

(b) serves only, or is within:

(i) a sole-occupancy unit in a class 2 or 3 building or a class 4 part;

(ii) a sole-occupancy unit with a floor area not more than 200m<sup>2</sup> in a class 5, 6, 7 or 8 building;

(iii) a space which is otherwise inaccessible to persons at all times when the door is locked.

D2.22 - Re-entry from fire isolated exits.

Doors in fire isolated stairs not to be lockable from the inside.

D2.8 - Enclosure of space under stairs and ramps.

The space below fire rated stairs and required non fire isolated stairs and ramps is not to be enclosed to form a cupboard or similar enclosed space.

### Stair Type Legend

Note: All Rein. Concrete Stairs to Structural Engineer's Details

STAIR 01	REIN. CONC. STAIR 3 STEPS 250mm GOINGS 150.0mm RISERS 25mm SPLAY
STAIR 02	REIN. CONC. STAIR 3 STEPS 250mm GOINGS 150.0mm RISERS 25mm SPLAY
STAIR 03	REIN. CONC. STAIR 3 STEPS 250mm GOINGS 150.0mm RISERS 25mm SPLAY
STAIR 04	REIN. CONC. STAIR 15 STEPS 250mm GOINGS 150.0mm RISERS 25mm SPLAY
STAIR 05	REIN. CONC. STAIR 16 STEPS 250mm GOINGS 187.5mm RISERS 25mm SPLAY

### Part D2 - Construction of Exits

All stair construction shall be in accordance with the BCA, D2.9, D2.13, D2.14, D2.15, D2.16, D2.17, D2.20, D2.21, and D2.23.

Ceiling levels of Units to be a minimum of 2.7m height except where bulkheads are shown.

hatch indicates bulkhead over with 2.4m ceiling height  
(Height of all rooms and spaces in accordance with BCA Part F3.1)

Post-Adaptable Layouts:  
Refer to dwg no. 503

Window Schedule + Details:  
Refer to dwg no. 507 + 508

### Notes:

- Party walls are not to be compromised by the incorporation of a plumbing pipe or any other service element.
- Internal Wet Areas: selected ceramic floor tiles on screed laid to fall to floorwaste. Provisions for waterproofing, damp proofing and floorwastes in accordance with AS 2870 + AS3740 + BCA Part F1.10 & F1.10
- All mechanical ventilation to mechanical engineer's details and specifications
- All units to have wall mounted drying cabinets in laundries.
- Balconies: 1000mm high pre-painted steel framed balustrade with glass infill panels to comply with the BCA
- All rain water drainage pipes on balconies are to run inside the slab connected to downpipes which are inside the balconies. See hydraulic engineers' drawings for details.

### Legend

RLXXXX	Structural Floor Level
RLXXXX	Finished Reduced Level

### General Legend

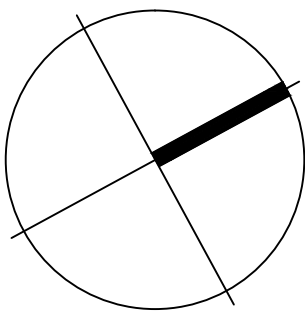
mechanical ventilation over fan to mechanical engineer's detail	BCA and Australian Standards notes	convex mirror
mechanical ventilation through wall fan to mechanical engineer's detail	fire hose reel	hose cock
65mm stud framed wall with 20mm cavity providing discontinuous construction in accordance with the B.C.A. - refer to detail	duct	shower
fire shutter linked to adjacent internal smoke detector	refrigerator	washing machine
smoke detector hard wired to mains	range hood over ct	cupboard
denotes windows to be fire sprinkled	cook top	floor waste
fire hydrant	under bench oven	wall oven
	sink	wardrobe
	pantry	walk in wardrobe
	dish washer	linen
	water closet	downpipe
	vanity unit	stack
	wall basin	
	sprinkler dropper	

### Fire and Sound Rating Legend

60	building element to be FRL 60 / 60 / 60	55	Rw 55 sound insulation rating
90	building element to be FRL 90 / 90 / 90	50	Rw 50 sound insulation rating
120	building element to be FRL 120 / 120 / 120	50	Rw + Ctr (airborne) 50 sound insulation rating
180	building element to be FRL 180 / 180 / 180	60	building element to be FRL - / 60 / 60
180	building element to be FRL 120 / - / -	60	building element to be FRL - / 90 / 90
180	building element to be FRL 180 / - / -	60	building element to be FRL - / 120 / 120

Note: Walls of service ducts to have sound insulation as follows:  
- Rtr = Ctr (airborne) 40 if the adjacent room is a habitable room  
- Rtr = Ctr (airborne) 25 if the adjacent room is a kitchen or non-habitable room

True northpoint



0 1 2 5 m

Notes:

Do not scale, check and verify all dimensions before commencing new work, ground levels may vary due to site conditions.

### C1.10 - Fire hazard properties

Fire hazard properties of materials and assemblies are to comply with the BCA C1.10 & specification C1.10 or C1.10(a)

### C2.7 - Separation of fire walls

Construct fire walls in accordance with BCA 2.7(a) and Separation of fire compartments in accordance with the BCA 2.7(c) and AS 3700.

### C2.10 - Separation of lift shafts

Lifts must be separated from the remainder of the building by enclosure in a shaft to comply with BCA C2.10.

### C2.13 - Electricity supply system

Separation of all electrical equipment to comply with BCA C2.13.

### C3.2 - Protection of openings in external walls

Openings in an external wall is required to have an FRL must be protected in accordance with BCA C3.4

### C3.3 - Separation of external walls and openings in fire compartments

The distance between external walls and any openings within them in difference fire compartments separated by a fire wall must not be less than that set out in Table C3.3 unless each wall have an FRL not less than 60/60/60 and any openings protected in accordance with C3.4.

### E3.7 - Fire services controls

In passenger lifts designed in accordance with AS 1735 Parts 1 or 2, all lift cars serving any storey above an effective height of 12m must be provided with fire service controls.

### C3.10 - Openings in fire-isolated lift shafts

(a) An entrance door to that shaft must be protected by -/60/- fire doors to comply with AS 1735.11 and remain closed when not in use.

### C3.11 - Bounding construction: Class 2, 3 & 4 buildings

A doorway must be protected if it provides access from a sole-occupancy unit to a public corridor in accordance with BCA C3.11, and Specification C1.1 and C3.4.

### C3.12 & C3.15 - Openings in floors and ceilings for services

Service openings through fire rated floors must be fire stopped with an approved method in accordance with BCA C3.12 and C3.15

### D2.7 - Installations in exits & paths of travel

Gas or other fuel services must not be installed in a required exit. Services or equipment installations must be enclosed in non-combustible cupboards with smoke seals.

### E3.0 Lift Construction

The lift shall be constructed in accordance with the BCA E3. Provisions should be made for a stretcher facility as per BCA E3.2, (also see BCA E3.6 + AS 1735.12 for details of design for disabled people)

P1 Prelim. Issue to Consultants

12.02.14

Issue description

Date

architex

Ryleton ply ltd t/as Architex  
abn 32 003 315 142

55 Cowper Street,  
Granville, 2142  
email@architex.com.au  
www.architex.com.au

Tel. 9682 5088  
Fax 9897 1606

Project

Construction Certificate  
Proposed Mixed Use Development

Project address

2-8 East Street  
Granville

Client

Toplace Pty. Ltd.

Title

Levels 2 + 3

Drawn

pdp

Scale

1:100 @ A1

Checked

Job No.

2050

Drawing No.

302

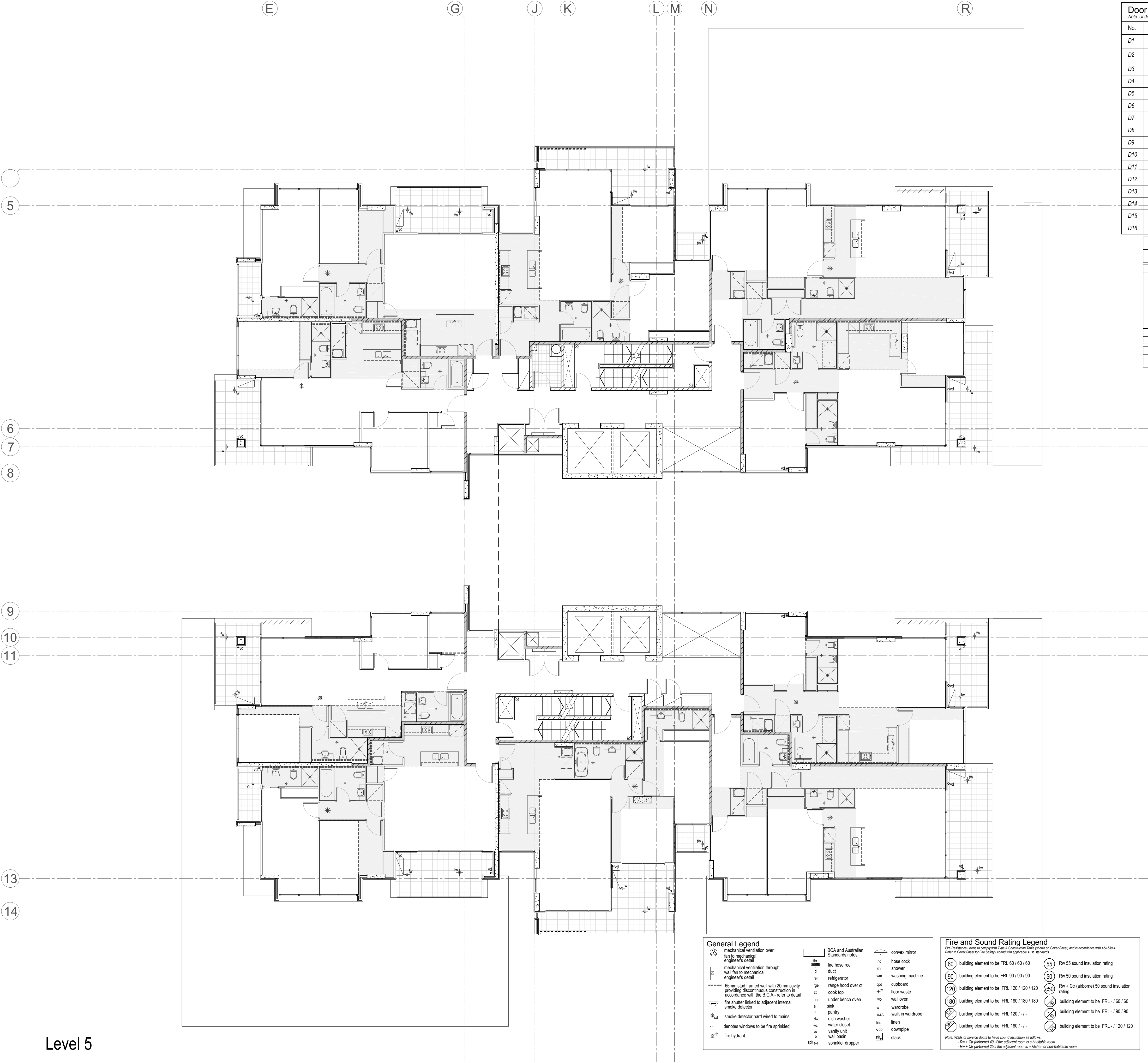
Issue

P1

CONSTRUCTION CERTIFICATE ONLY

Levels 2 + 3





Door Schedule					
Note: Under cut all bathroom and laundry doors 10 mm					
No.	Width	Height	Thick.	Qty.	Notes
D1	920	2340	40	134	solid core, self closing door (Rw 30 sound insulation rating) FRL -R60/30
D2	820	2340	40	156	solid core, self closing door (Rw 30 sound insulation rating) FRL -R60/30
D3	920	2340	35	35	
D4	820	2340	35	337	
D5	720	2340	35	339	
D6	620	2340	35	63	
D7	570	2340	40	54	solid core
D8	820	2340	40	4	solid core, self closing door FRL -/120/0
D9	720	2340	35	25	cavity sliding door
D10	820	2340	40	27	solid core w/ ventilation grilles
D11	720	2340	40	6	solid core
D12	920	2040	40	2	solid core
D13	820	2340	40	n/a	FRL -/120/30 smoke sealed fire door
D14	820	2040	40	10	solid core, self closing door (Rw 30 sound insulation rating) FRL -R60/30
D15	820	2340	40	2	solid core
D16	720	2040	35	21	

NOTE: OPERATION OF DOOR LATCHES TO ALL REQUIRED EXIT DOORS SHALL BE IN ACCORDANCE WITH BCA D2.3.

NOTE: PROVIDE REMOVABLE HINGES TO ALL BATHROOMWC DOORS THAT ARE WITHIN 1.2M OF A CLOSET PAN AS PER B.C.A (F2.5)

D2.21 - Operation of latch

A door in a required exit forming part of a required exit or in the path of travel to a required exit must be readily operable without a key from the side that faces a person seeking egress, by a single hand downward action or putting action on a single device which is located between 900mm and 1.2m from the floor, except if it -

(a) serves a vault, strong room, sanitary compartment, or the like; or

(b) serves only, or is within -

(i) a sole-occupancy unit in a class 2 or 3 building or a class 4 part;

(ii) a sole-occupancy unit with a floor area not more than 200m<sup>2</sup> in a class 5, 6, 7 or 8 building;

(iii) a space which is otherwise inaccessible to persons at all times when the door is locked.

D2.22 - Re-entry from fire isolated exits.

Doors in fire isolated stairs not to be lockable from the inside.

D2.8 - Enclosure of space under stairs and ramps.

The space below fire rated stairs and required non fire isolated stairs and ramps is not to be enclosed to form a cupboard or similar enclosed space.

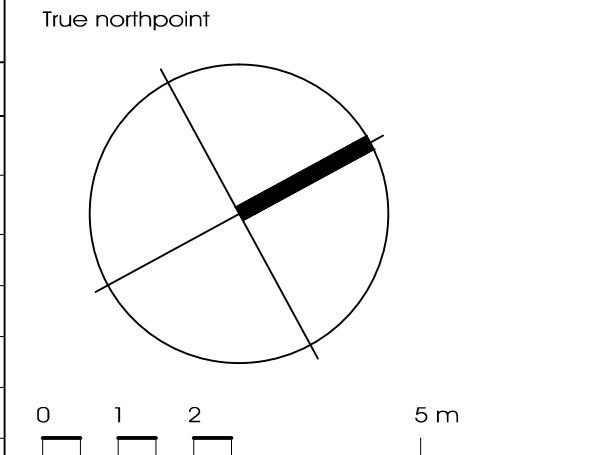
### Stair Type Legend

Note: All Rein. Concrete Stairs to Structural Engineer's Details

STAIR 01	REIN. CONC. STAIR 3 STEPS 250mm GOINGS 150.0mm RISERS 25mm SPLAY
STAIR 02	REIN. CONC. STAIR 3 STEPS 250mm GOINGS 150.0mm RISERS 25mm SPLAY
STAIR 03	REIN. CONC. STAIR 3 STEPS 250mm GOINGS 150.0mm RISERS 25mm SPLAY
STAIR 04	REIN. CONC. STAIR 15 STEPS 250mm GOINGS 150.0mm RISERS 25mm SPLAY
STAIR 05	REIN. CONC. STAIR 16 STEPS 250mm GOINGS 187.5mm RISERS 25mm SPLAY

### Part D2 - Construction of Exits

All stair construction shall be in accordance with the BCA, D2.9, D2.13, D2.14, D2.15, D2.16, D2.17, D2.20, D2.21, and D2.23.



Notes:

Do not scale, check and verify all dimensions before commencing new work, ground levels may vary due to site conditions.

C1.10 - Fire hazard properties

Fire hazard properties of materials and assemblies are to comply with the BCA C1.10 & specification C1.10 or C1.10(a)

C2.7 - Separation of fire walls

Construct fire walls in accordance with BCA 2.7(a) and Separation of fire compartments in accordance with the BCA 2.7(c) and AS 3700.

C2.10 - Separation of lift shafts

Lifts must be separated from the remainder of the building by enclosure in a shaft to comply with BCA C2.10.

C2.13 - Electricity supply system

Separation of all electrical equipment to comply with BCA C2.13.

C3.2 - Protection of openings in external walls

Openings in an external wall that is required to have an FRL must be protected in accordance with BCA C3.4

C3.3 - Separation of external walls and openings in fire compartments

The distance between external walls and any openings within them in difference fire compartments separated by a fire wall must not be less than that set out in Table C3.3 unless each wall have an FRL not less than R60/R60/0 and any openings protected in accordance with C3.4.

E3.7 - Fire services controls

In passenger lifts designed in accordance with AS 1735 Parts 1 or 2, all lift cars serving any storey above an effective height of 12m must be provided with fire service controls.

C3.10 - Openings in fire-isolated lift shafts

(a) An entrance door to that shaft must be protected by -R60- fire doors to comply with AS 1735.11 and remain closed when not in use.

C3.11 - Bounding construction: Class 2, 3 & 4 buildings

A doorway must be protected if it provides access from a sole-occupancy unit to a public corridor in accordance with BCA C3.11, and Specification C1.1 and C3.4.

C3.12 & C3.15 - Openings in floors and ceilings for services

Service openings through fire rated floors must be fire stopped with an approved method in accordance with BCA C3.12 and C3.15

D2.7 - Installations in exits & paths of travel

Gas or other fuel services must not be installed in a required exit. Services or equipment installations must be enclosed in non-combustible cupboards with smoke seals.

E3.0 Lift Construction

The lift shall be constructed in accordance with the BCA E3. Provisions should be made for a stretcher facility as per BCA E3.2, (also see BCA E3.6 + AS 1735.12 for details of design for disabled people)

P1 Prelim. Issue to Consultants	12.02.14
Issue description	Date

Ryleton ply ltd t/as Architex  
abn 32 003 315 142

55 Cowper Street,  
Granville, 2142  
email@architex.com.au  
www.architex.com.au

Tel. 9682 5088  
Fax 9897 1606

Ceiling levels of Units to be a minimum of 2.7m height except where bulkheads are shown.

hatch indicates bulkhead over with 2.4m ceiling height  
(Height of all rooms and spaces in accordance with BCA Part F3.1)

Post-Adaptable Layouts:  
Refer to dwg no. 503

Window Schedule + Details:  
Refer to dwg no. 507 + 508

Notes:

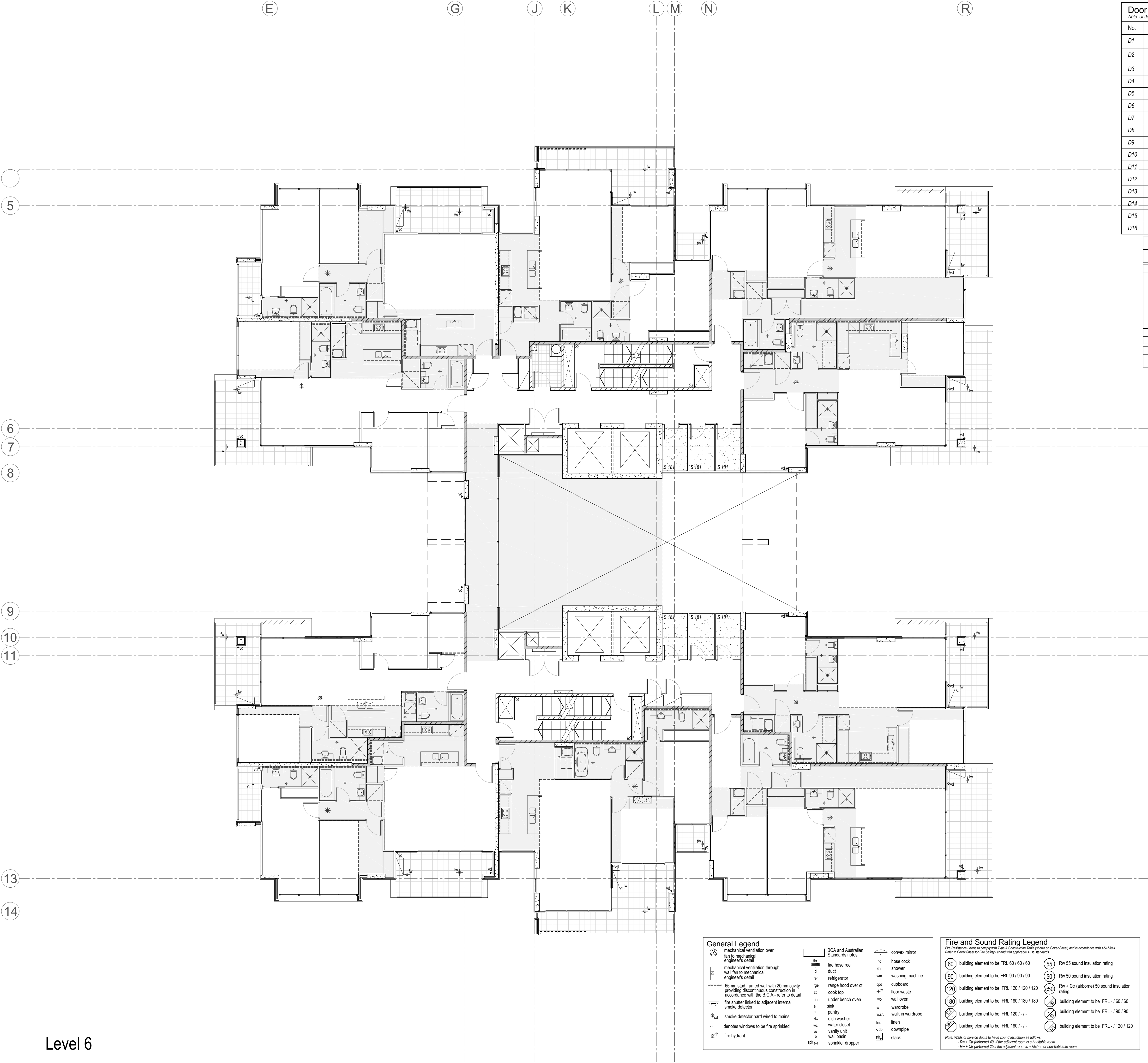
- Party walls are not to be compromised by the incorporation of a plumbing pipe or any other service element.
- Internal Wet Areas: selected ceramic floor tiles on screed laid to fall to floorwaste. Provisions for waterproofing, damp proofing and floorwastes in accordance with AS 2870 + AS3740 + BCA Part F1.10 & F1.10
- All mechanical ventilation to mechanical engineer's details and specifications
- All units to have wall mounted drying cabinets in laundries.
- Balconies: 1000mm high pre-painted steel framed balustrade with glass infill panels to comply with the BCA
- All rain water drainage pipes on balconies are to run inside the slab connected to downpipes which are inside the balconies. See hydraulic engineers' drawings for details.

Legend		
RXXXXX	Structural Floor Level	
xRXXXX	Finished Reduced Level	

CONSTRUCTION CERTIFICATE ONLY

Project		
Construction Certificate Proposed Mixed Use Development		
Project address		
2-8 East Street Granville		
Client		
Toplace Pty. Ltd.		
Title		
Level 5		
Drawn	Scale	Checked
pdp	1:100 @ A1	
Job No.	Drawing No.	Issue
2050	303	P1





Door Schedule					
Note: Under cut all bathroom and laundry doors 10 mm					
No.	Width	Height	Thick.	Qty.	Notes
D1	920	2340	40	134	solid core, self closing door (Rw 30 sound insulation rating) FRL -v60/30
D2	820	2340	40	156	solid core, self closing door (Rw 30 sound insulation rating) FRL -v60/30
D3	920	2340	35	35	
D4	820	2340	35	337	
D5	720	2340	35	339	
D6	620	2340	35	63	
D7	570	2340	40	54	solid core
D8	820	2340	40	4	solid core, self closing door FRL -v120/00
D9	720	2340	35	25	cavity sliding door
D10	820	2340	40	27	solid core w/ ventilation grilles
D11	720	2340	40	6	solid core
D12	920	2040	40	2	solid core
D13	820	2340	40	n/a	FRL -v120/30 smoke sealed fire door
D14	820	2040	40	10	solid core, self closing door (Rw 30 sound insulation rating) FRL -v60/30
D15	820	2340	40	2	solid core
D16	720	2040	35	21	

NOTE: OPERATION OF DOOR LATCHES TO ALL REQUIRED EXIT DOORS SHALL BE IN ACCORDANCE WITH BCA D2.3.

NOTE: PROVIDE REMOVABLE HINGES TO ALL BATHROOMWC DOORS THAT ARE WITHIN 1.2M OF A CLOSET PAN AS PER B.C.A (F2.5)

D2.21 - Operation of latch

A door in a required exit forming part of a required exit or in the path of travel to a required exit must be readily operable without a key from the side that faces a person seeking egress, by a single hand downward action or putting action on a single device which is located between 900mm and 1.2m from the floor, except if it -

(a) serves a vault, strong-room, sanitary compartment, or the like; or

(b) serves only, or is within -

(i) a sole-occupancy unit in a class 2 or 3 building or a class 4 part;

(ii) a sole-occupancy unit with a floor area not more than 200m<sup>2</sup> in a class 5, 6, 7 or 8 building;

(iii) a space which is otherwise inaccessible to persons at all times when the door is locked.

D2.22 - Re-entry from fire isolated exits.

Doors in fire isolated stairs not to be lockable from the inside.

D2.8 - Enclosure of space under stairs and ramps.

The space below fire rated stairs and required non fire isolated stairs and ramps is not to be enclosed to form a cupboard or similar enclosed space.

### Stair Type Legend

Note: All Rein. Concrete Stairs to Structural Engineer's Details

STAIR 01	REIN. CONC. STAIR 3 STEPS 250mm GOINGS 150.0mm RISERS 25mm SPLAY
STAIR 02	REIN. CONC. STAIR 3 STEPS 250mm GOINGS 150.0mm RISERS 25mm SPLAY
STAIR 03	REIN. CONC. STAIR 3 STEPS 250mm GOINGS 150.0mm RISERS 25mm SPLAY
STAIR 04	REIN. CONC. STAIR 15 STEPS 250mm GOINGS 150.0mm RISERS 25mm SPLAY
STAIR 05	REIN. CONC. STAIR 16 STEPS 250mm GOINGS 187.5mm RISERS 25mm SPLAY

#### Part D2 - Construction of Exits

All stair construction shall be in accordance with the BCA, D2.9, D2.13, D2.14, D2.15, D2.16, D2.17, D2.20, D2.21, and D2.23.

Ceiling levels of Units to be a minimum of 2.7m height except where bulkheads are shown.

hatch indicates bulkhead over with 2.4m ceiling height  
(Height of all rooms and spaces in accordance with BCA Part F3.1)

Post-Adaptable Layouts:  
Refer to dwg no. 503

Window Schedule + Details:  
Refer to dwg no. 507 + 508

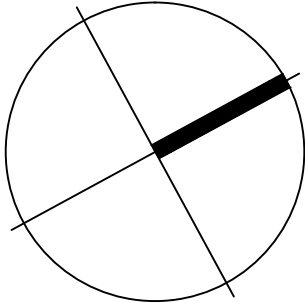
### Notes:

- Party walls are not to be compromised by the incorporation of a plumbing pipe or any other service element.
- Internal Wet Areas: selected ceramic floor tiles on screed laid to fall to floorwaste. Provisions for waterproofing, damp proofing and floorwastes in accordance with AS 2870 + AS3740 + BCA Part F1.10 & F1.10
- All mechanical ventilation to mechanical engineer's details and specifications
- All units to have wall mounted drying cabinets in laundries.
- Balconies: 1000mm high pre-painted steel framed balustrade with glass infill panels to comply with the BCA
- All rain water drainage pipes on balconies are to run inside the slab connected to downpipes which are inside the balconies. See hydraulic engineers' drawings for details.

### Legend

RLXXXX	Structural Floor Level
RLXXXX	Finished Reduced Level

True northpoint



0 1 2 5 m

Notes:

Do not scale, check and verify all dimensions before commencing new work, ground levels may vary due to site conditions.

#### C1.10 - Fire hazard properties

Fire hazard properties of materials and assemblies are to comply with the BCA C1.10 & specification C1.10 or C1.10(a)

#### C2.7 - Separation of fire walls

Construct fire walls in accordance with BCA 2.7(a) and Separation of fire compartments in accordance with the BCA 2.7(c) and AS 3700.

#### C2.10 - Separation of lift shafts

Lifts must be separated from the remainder of the building by enclosure in a shaft to comply with BCA C2.10.

#### C2.13 - Electricity supply system

Separation of all electrical equipment to comply with BCA C2.13.

#### C3.2 - Protection of openings in external walls

Openings in an external wall that is required to have an FRL must be protected in accordance with BCA C3.4

#### C3.3 - Separation of external walls and openings in fire compartments

The distance between external walls and any openings within them in difference fire compartments separated by a fire wall must not be less than that set out in Table C3.3 unless each wall have an FRL not less than 60/60/60 and any openings protected in accordance with C3.4.

#### E3.7 - Fire services controls

In passenger lifts designed in accordance with AS 1735 Parts 1 or 2, all lift cars serving any storey above an effective height of 12m must be provided with fire service controls.

#### C3.10 - Openings in fire-isolated lift shafts

(a) An entrance door to that shaft must be protected by -R60- fire doors to comply with AS 1735.11 and remain closed when not in use.

#### C3.11 - Bounding construction: Class 2, 3 & 4 buildings

A doorway must be protected if it provides access from a sole-occupancy unit to a public corridor in accordance with BCA C3.11, and Specification C1.1 and C3.4.

#### C3.12 & C3.15 - Openings in floors and ceilings for services

Service openings through fire rated floors must be fire stopped with an approved method in accordance with BCA C3.12 and C3.15

#### D2.7 - Installations in exits & paths of travel

Gas or other fuel services must not be installed in a required exit. Services or equipment installations must be enclosed in non-combustible cupboards with smoke seals.

#### E3.0 Lift Construction

The lift shall be constructed in accordance with the BCA E3. Provisions should be made for a stretcher facility as per BCA E3.2, (also see BCA E3.6 + AS 1735.12 for details of design for disabled people)

P1 Prelim. Issue to Consultants	12.02.14
Issue description	Date

architex

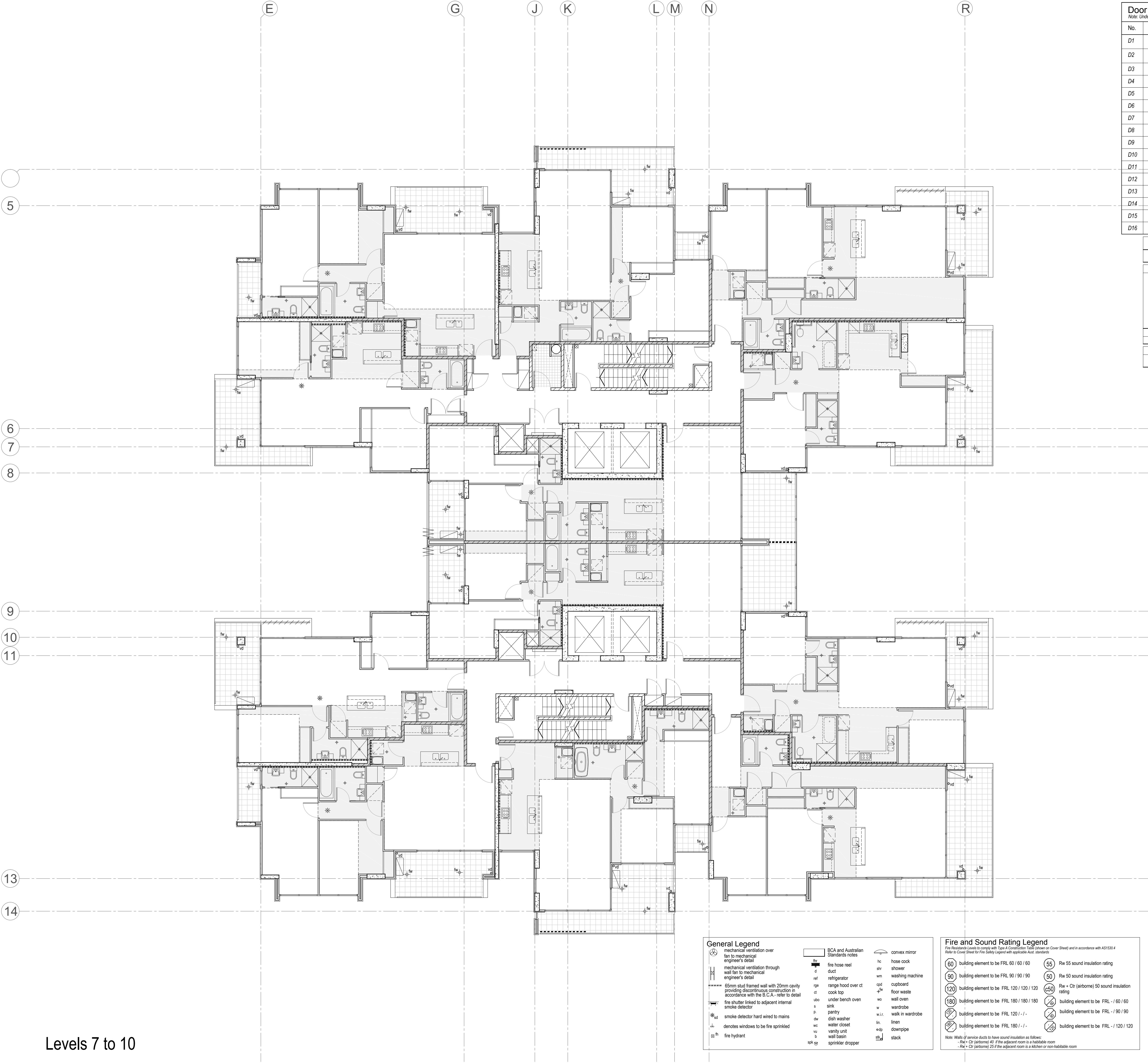
Ryleton ply ltd t/as Architex  
abn 32 003 315 142

55 Cowper Street,  
Granville, 2142  
email@architex.com.au  
www.architex.com.au

Tel. 9682 5088  
Fax 9897 1606

Project		
Construction Certificate Proposed Mixed Use Development		
Project address 2-8 East Street Granville		
Client Toplace Pty. Ltd.		
Title Level 6		
Drawn pdp	Scale 1:100 @ A1	Checked
Job No. 2050	Drawing No. 304	Issue P1





Door Schedule					
Note: Under cut all bathroom and laundry doors 10 mm					
No.	Width	Height	Thick.	Qty.	Notes
D1	920	2340	40	134	solid core, self closing door (Rw 30 sound insulation rating) FRL ->60/30
D2	820	2340	40	156	solid core, self closing door (Rw 30 sound insulation rating) FRL ->60/30
D3	920	2340	35	35	
D4	820	2340	35	337	
D5	720	2340	35	339	
D6	620	2340	35	63	
D7	570	2340	40	54	solid core
D8	820	2340	40	4	solid core, self closing door FRL ->120/0/0
D9	720	2340	35	25	cavity sliding door
D10	820	2340	40	27	solid core w/ ventilation grilles
D11	720	2340	40	6	solid core
D12	920	2040	40	2	solid core
D13	820	2340	40	n/a	FRL ->120/30 smoke sealed fire door
D14	820	2040	40	10	solid core, self closing door (Rw 30 sound insulation rating) FRL ->60/30
D15	820	2340	40	2	solid core
D16	720	2040	35	21	

NOTE: OPERATION OF DOOR LATCHES TO ALL REQUIRED EXIT DOORS SHALL BE IN ACCORDANCE WITH BCA D2.3.

NOTE: PROVIDE REMOVABLE HINGES TO ALL BATHROOMWC DOORS THAT ARE WITHIN 1.2M OF A CLOSET PAN AS PER B.C.A. (F2.5)

D2.21 - Operation of latch

A door in a required exit forming part of a required exit or in the path of travel to a required exit must be readily operable without a key from the side that faces a person seeking egress, by a single hand downward action or pushing action on a single device which is located between 900mm and 1.2m from the floor, except if it -

(a) serves a vault, strong-room, sanitary compartment, or the like; or

(b) serves only, or is within -

(i) a sole-occupancy unit in a class 2 or 3 building or a class 4 part;

(ii) a sole-occupancy unit with a floor area not more than 200m<sup>2</sup> in a class 5, 6, 7 or 8 building;

(iii) a space which is otherwise inaccessible to persons at all times when the door is locked.

D2.22 - Re-entry from fire isolated exits.

Doors in fire isolated stairs not to be lockable from the inside.

D2.8 - Enclosure of space under stairs and ramps.

The space below fire rated stairs and required non fire isolated stairs and ramps is not to be enclosed to form a cupboard or similar enclosed space.

### Stair Type Legend

Note: All Rein. Concrete Stairs to Structural Engineer's Details

STAIR 01	REIN. CONC. STAIR 3 STEPS 250mm GOINGS 150.0mm RISERS 25mm SPLAY
STAIR 02	REIN. CONC. STAIR 3 STEPS 250mm GOINGS 150.0mm RISERS 25mm SPLAY
STAIR 03	REIN. CONC. STAIR 3 STEPS 250mm GOINGS 150.0mm RISERS 25mm SPLAY
STAIR 04	REIN. CONC. STAIR 15 STEPS 250mm GOINGS 150.0mm RISERS 25mm SPLAY
STAIR 05	REIN. CONC. STAIR 16 STEPS 250mm GOINGS 187.5mm RISERS 25mm SPLAY

#### Part D2 - Construction of Exits

All stair construction shall be in accordance with the BCA, D2.9, D2.13, D2.14, D2.15, D2.16, D2.17, D2.20, D2.21, and D2.23.

Ceiling levels of Units to be a minimum of 2.7m height except where bulkheads are shown.

hatch indicates bulkhead over with 2.4m ceiling height  
(Height of all rooms and spaces in accordance with BCA Part F3.1)

Post-Adaptable Layouts:  
Refer to dwg no. 503

Window Schedule + Details:  
Refer to dwg no. 507 + 508

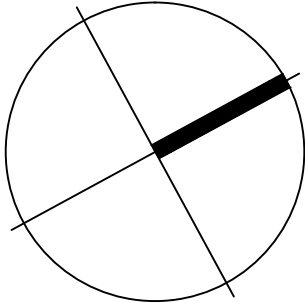
### Notes:

- Party walls are not to be compromised by the incorporation of a plumbing pipe or any other service element.
- Internal Wet Areas: selected ceramic floor tiles on screed laid to fall to floorwaste. Provisions for waterproofing, damp proofing and floorwastes in accordance with AS 2870 + AS3740 + BCA Part F1.10 & F1.10
- All mechanical ventilation to mechanical engineer's details and specifications
- All units to have wall mounted drying cabinets in laundries.
- Balconies: 1000mm high pre-painted steel framed balustrade with glass infill panels to comply with the BCA
- All rain water drainage pipes on balconies are to run inside the slab connected to downpipes which are inside the balconies. See hydraulic engineers' drawings for details.

### Legend

RLXXXX	Structural Floor Level
RLXXXX	Finished Reduced Level

True northpoint



0 1 2 5 m

Notes:

Do not scale, check and verify all dimensions before commencing new work, ground levels may vary due to site conditions.

#### C1.10 - Fire hazard properties

Fire hazard properties of materials and assemblies are to comply with the BCA C1.10 & specification C1.10 or C1.10(a)

#### C2.7 - Separation of fire walls

Construct fire walls in accordance with BCA 2.7(a) and Separation of fire compartments in accordance with the BCA 2.7(c) and AS 3700.

#### C2.10 - Separation of lift shafts

Lifts must be separated from the remainder of the building by enclosure in a shaft to comply with BCA C2.10.

#### C2.13 - Electricity supply system

Separation of all electrical equipment to comply with BCA C2.13.

#### C3.2 - Protection of openings in external walls

Openings in an external wall that is required to have an FRL must be protected in accordance with BCA C3.4

#### C3.3 - Separation of external walls and openings in fire compartments

The distance between external walls and any openings within them in difference fire compartments separated by a fire wall must not be less than that set out in Table C3.3 unless each wall have an FRL not less than 60/60/60 and any openings protected in accordance with C3.4.

#### E3.7 - Fire services controls

In passenger lifts designed in accordance with AS 1735 Parts 1 or 2, all lift cars serving any storey above an effective height of 12m must be provided with fire service controls.

#### C3.10 - Openings in fire-isolated lift shafts

(a) An entrance door to that shaft must be protected by ->60/- fire doors to comply with AS 1735.11 and remain closed when not in use.

#### C3.11 - Bounding construction: Class 2, 3 & 4 buildings

A doorway must be protected if it provides access from a sole-occupancy unit to a public corridor in accordance with BCA C3.11, and Specification C1.1 and C3.4.

#### C3.12 & C3.15 - Openings in floors and ceilings for services

Service openings through fire rated floors must be fire stopped with an approved method in accordance with BCA C3.12 and C3.15

#### D2.7 - Installations in exits & paths of travel

Gas or other fuel services must not be installed in a required exit. Services or equipment installations must be enclosed in non-combustible cupboards with smoke seals.

#### E3.0 Lift Construction

The lift shall be constructed in accordance with the BCA E3. Provisions should be made for a stretcher facility as per BCA E3.2, (also see BCA E3.6 + AS 1735.12 for details of design for disabled people)

P1 Prelim. Issue to Consultants

12.02.14

Issue description

Date

**architex**

Ryleton ply ltd t/as Architex  
abn 32 003 315 142

55 Cowper Street,  
Granville, 2142  
email@architex.com.au  
www.architex.com.au

Tel. 9682 5088  
Fax 9897 1606

Project

Construction Certificate  
Proposed Mixed Use Development

Project address

2-8 East Street  
Granville

Client

Toplace Pty. Ltd.

Title

Levels 7 to 10

Drawn

pdp

Scale

1:100 @ A1

Checked

Job No.

2050

Drawing No.

305

Issue

P1

Levels 7 to 10